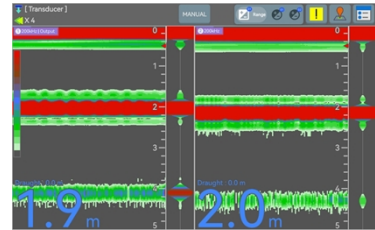


NSR's new echo sounder:

- SDR (Software Defined Radio) technology
- High accuracy and stability
- Large color LCD, touch screen operation
- Android O/S for easy operation
- Auto depth detection, auto range and auto gain functions
- BAM alarm function
- Meet the IMO and ISO standards
- Type approval with DNV (MED) and CCS



- NED-3010 echo sounder is designed for vessel navigation, which provides reliable information about the depth of water under the vessel through transducers.
- NED-3010 adopts SDR technology and Android O/S.
- NED-3010 conforms to the standards of IMO MSC.74 (69) Annex 4: A.224 (VII) , IMO MSC.302 (87), IEC 61162-1, IEC 62923-1, IEC 62923-2 and ISO 9875.



SPECIFICATIONS

- Channel: 2 channels
- Frequency: 200kHz or 50kHz
- Measure Range: 0.3 ~ 200m (200kHz), 2 ~ 200m (50kHz)
- TX Power: 600W
- O/S: Android
- LCD Display: Touch screen operation
 - Size: 10.1 inch
 - Resolution: 1280×800
- Interface: I/O sentence (IEC 61162-1 & IEC 61162-2)
- Power Supply: DC 24 V (range 9 V ~ 36 V)
- Size: 189.8 (H) × 321.3 (W) × 100.6 (D) mm (Display Unit)
- Weight: 2.25 kg (Display Unit)
- IP Grade: IP22 (Display Unit), IP67 (Transducer)

EQUIPMENT LIST

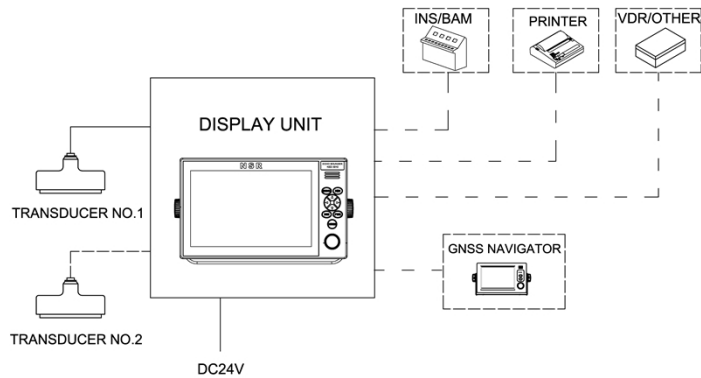
● STANDARD

- | | | |
|--------------------|---------------------|-------|
| - Display Unit | NED-3010 | 1 pc |
| - Transducer (15m) | NXD-200A or NXD-50A | 1 pc |
| - Accessories | | 1 set |

● OPTIONS

- | | | |
|-----------------------------------|---------------------|------|
| - Junction Box | NED3000J | 1 pc |
| - Transducer (15m, 25m or others) | NXD-200A or NXD-50A | 1 pc |
| - Transducer Tank | NXT-100 | 1 pc |
| - Flush Mount Bracket | | 1 pc |

SYSTEM DIAGRAM



SIZE DIMENSION

